

I Will Follow

Words and Music by
Chris Tomlin, Jason Ingram
and Reuben Morgan

♩=96 **INTRO**

Em

C/E



Where You go, I'll ___ go; ___ Where You stay, I'll ___ stay; _

3 G/D

D

Em⁷



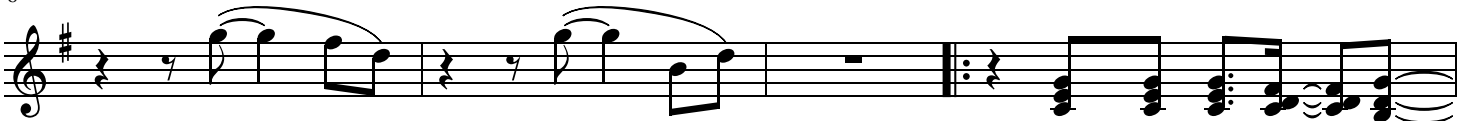
— When You move, I'll _ move. _ I will fol - low. _ Oh, _____

6 C²

G

D⁽⁴⁾

C



oh, _____ oh. _____
1. All Your ways are ___ good, _
2. Light in - to the ___ world, .

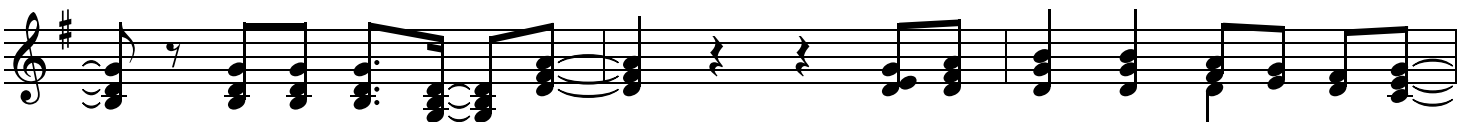
VERSE

10 Em⁷

D⁽⁴⁾

G²

D/F#



— all Your ways are _ sure; _ I will trust in You _ a - lone. .
— Light in - to my _ life— _ I will live for You _ a - lone. .

13 C

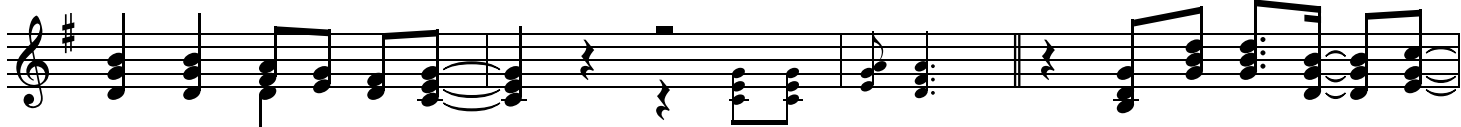
Em⁷

D⁽⁴⁾



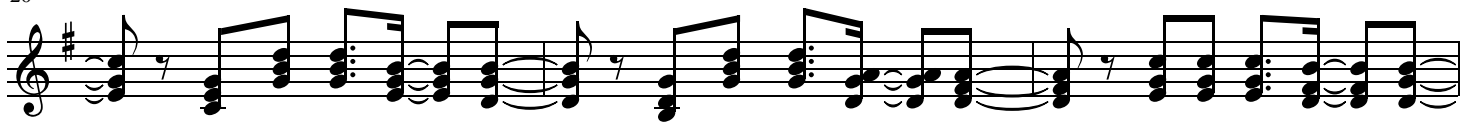
— High - er than my ___ sight, _ high a - bove my _ life; _ I will
— You're the One I ___ seek, _ know - ing I will _ find _ all I

16 G² D/F# C D⁽⁴⁾ Em⁷ CHORUS



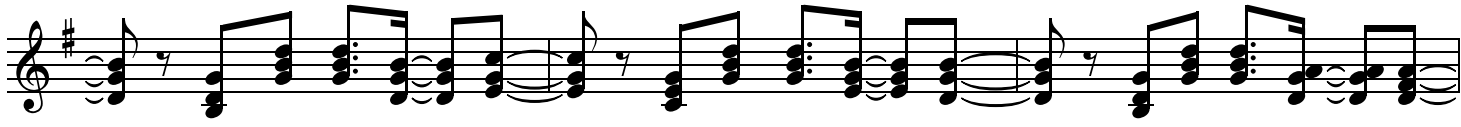
trust in You a-lone. need in You a-lone. In You a-lone. Where You go, I'll go;

20 C² G D⁽⁴⁾



Where You stay, I'll stay; When You move, I'll move. I will follow You.


23 Em⁷ C² G Last time to Coda



Whom You love, I'll love; How You serve, I'll serve; If this life I lose,

INTERLUDE

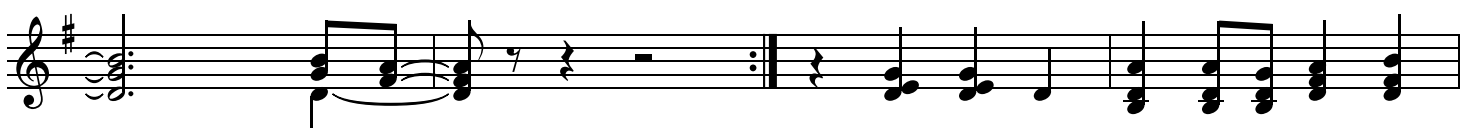
26 D⁽⁴⁾ Em⁷ C²



I will follow You, yeah. I will follow You,


BRIDGE

29 G D⁽⁴⁾ Cmaj⁹ G D



yeah. In You, there's life everlasting.

33 Cmaj⁹ G D Cmaj⁹



In You, there's freedom for my soul. In You, there's

36 G D Cmaj⁹ G D D.S. al Coda

joy, un - end - ing _____ joy; - And I will fol - low. -

39 \oplus Coda D⁽⁴⁾ CHORUS Em⁷ C²

I will fol - low. - Where You go, I'll - go; - Where You stay, I'll - stay; .

42 G D⁽⁴⁾ Em⁷

When You move, I'll - move. - I will fol - low - You. - Whom You love, I'll - love; .

45 C² G D⁽⁴⁾

How You serve, I'll - serve; - If this life I - lose, - I will fol - low - You, -

ENDING Em⁷ C² G

48

yeah. _____ I will fol - low - You, _____ yeah. _____

51 D⁽⁴⁾ Em⁷

I will fol - low - You, _____ yeah. _____

53 C² G D⁽⁴⁾

I will fol - low - You, _____ yeah. _____